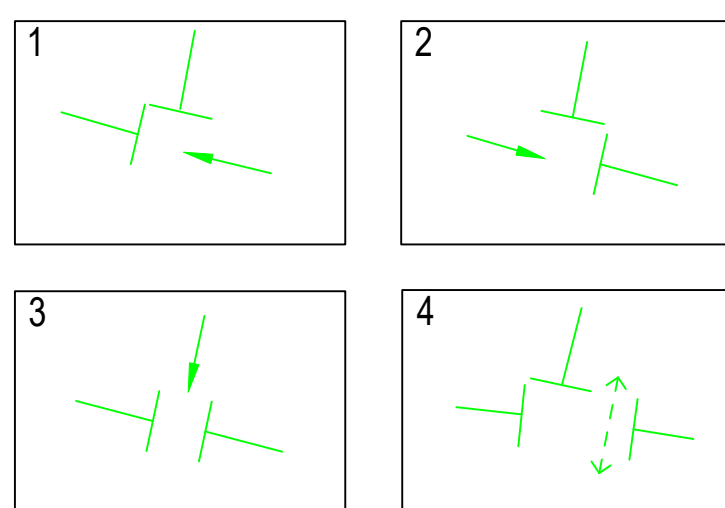
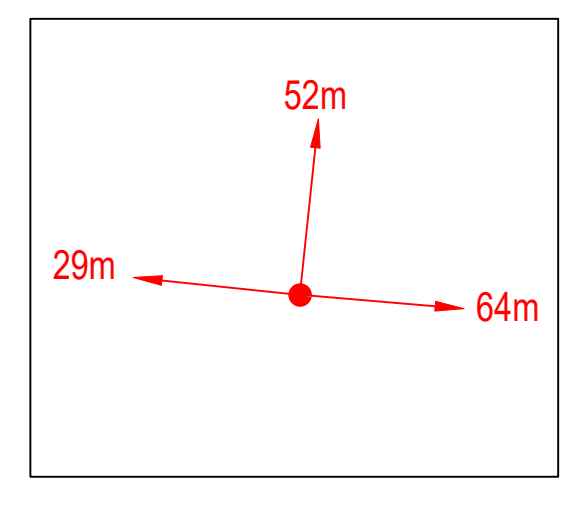


**Note:**  
Permanent lights to be suspended, bagged over and replaced with temp crossings

**Phasing Diagrams:**



**Distance from Datum Point to 'WHUGLS' Signs:**



**Initial Green Timings:**

- Phase 1 .....35..... seconds
- Phase 2 .....35..... seconds
- Phase 3 .....35..... seconds
- Phase 4 .....14\*..... seconds

\*Includes Blackout. Based upon 0.8 m/s walking speed across widest crossing.

**All Red Matrix (seconds):**

		To Phase			
		1	2	3	4
From Phase	1		10	15	2
	2	10		10	2
	3	15	10		2
	4	2	2	2	

**Go Traffic Management**

This drawing has been produced for a specific client & project identified below and is not intended for use by any other person or for any other purpose. © Go Traffic Management

**Risks:**

- Design completed from information provided + google maps desktop risk assessment
- Cone lamps must be used on all road with A speed limit of 40mph or more.

**Notes:**

- All signs as per Chapter 8. Distances between cones to be 9m maximum unless otherwise noted.
- Distances between signs NOT to scale for purpose of clarity.
- All sign placement subject to available safe working space.
- The purpose of the Traffic Management Plan is for it to be used only as a guide and all traffic management equipment should be put out according to the 'Safety at Street Works and Road Works - Code of Practice', i.e. Red Book & the 'Traffic Signs Manual Chapter 8', i.e. Yellow Book.
- Lane width past the works to be 3.5m maximum, 3.25m desirable minimum and 3.0m absolute minimum.
- Stop & Go boards must be available and utilised in the event of permanent signal failure in accordance with Code of Practice.
- Signs must be placed in accordance with TSM and the scheme RAMS pack.
- Site conditions may have changed since the design of the drawing any changes which subsequently affect the design need to be reported by the Traffic Management Operative & any changes implemented must comply with Chapter 8.

**DETAIL B** **DETAIL C2**

1. During operation, warning lights shall be illuminated at all times. 2. During operation, warning lights shall be illuminated at all times. 3. During operation, warning lights shall be illuminated at all times. 4. During operation, warning lights shall be illuminated at all times. 5. During operation, warning lights shall be illuminated at all times. 6. During operation, warning lights shall be illuminated at all times. 7. During operation, warning lights shall be illuminated at all times. 8. During operation, warning lights shall be illuminated at all times. 9. During operation, warning lights shall be illuminated at all times. 10. During operation, warning lights shall be illuminated at all times. 11. During operation, warning lights shall be illuminated at all times. 12. During operation, warning lights shall be illuminated at all times. 13. During operation, warning lights shall be illuminated at all times. 14. During operation, warning lights shall be illuminated at all times. 15. During operation, warning lights shall be illuminated at all times. 16. During operation, warning lights shall be illuminated at all times. 17. During operation, warning lights shall be illuminated at all times. 18. During operation, warning lights shall be illuminated at all times. 19. During operation, warning lights shall be illuminated at all times. 20. During operation, warning lights shall be illuminated at all times. 21. During operation, warning lights shall be illuminated at all times. 22. During operation, warning lights shall be illuminated at all times. 23. During operation, warning lights shall be illuminated at all times. 24. During operation, warning lights shall be illuminated at all times. 25. During operation, warning lights shall be illuminated at all times. 26. During operation, warning lights shall be illuminated at all times. 27. During operation, warning lights shall be illuminated at all times. 28. During operation, warning lights shall be illuminated at all times. 29. During operation, warning lights shall be illuminated at all times. 30. During operation, warning lights shall be illuminated at all times. 31. During operation, warning lights shall be illuminated at all times. 32. During operation, warning lights shall be illuminated at all times. 33. During operation, warning lights shall be illuminated at all times. 34. During operation, warning lights shall be illuminated at all times. 35. During operation, warning lights shall be illuminated at all times. 36. During operation, warning lights shall be illuminated at all times. 37. During operation, warning lights shall be illuminated at all times. 38. During operation, warning lights shall be illuminated at all times. 39. During operation, warning lights shall be illuminated at all times. 40. During operation, warning lights shall be illuminated at all times. 41. During operation, warning lights shall be illuminated at all times. 42. During operation, warning lights shall be illuminated at all times. 43. During operation, warning lights shall be illuminated at all times. 44. During operation, warning lights shall be illuminated at all times. 45. During operation, warning lights shall be illuminated at all times. 46. During operation, warning lights shall be illuminated at all times. 47. During operation, warning lights shall be illuminated at all times. 48. During operation, warning lights shall be illuminated at all times. 49. During operation, warning lights shall be illuminated at all times. 50. During operation, warning lights shall be illuminated at all times. 51. During operation, warning lights shall be illuminated at all times. 52. During operation, warning lights shall be illuminated at all times. 53. During operation, warning lights shall be illuminated at all times. 54. During operation, warning lights shall be illuminated at all times. 55. During operation, warning lights shall be illuminated at all times. 56. During operation, warning lights shall be illuminated at all times. 57. During operation, warning lights shall be illuminated at all times. 58. During operation, warning lights shall be illuminated at all times. 59. During operation, warning lights shall be illuminated at all times. 60. During operation, warning lights shall be illuminated at all times. 61. During operation, warning lights shall be illuminated at all times. 62. During operation, warning lights shall be illuminated at all times. 63. During operation, warning lights shall be illuminated at all times. 64. During operation, warning lights shall be illuminated at all times. 65. During operation, warning lights shall be illuminated at all times. 66. During operation, warning lights shall be illuminated at all times. 67. During operation, warning lights shall be illuminated at all times. 68. During operation, warning lights shall be illuminated at all times. 69. During operation, warning lights shall be illuminated at all times. 70. During operation, warning lights shall be illuminated at all times. 71. During operation, warning lights shall be illuminated at all times. 72. During operation, warning lights shall be illuminated at all times. 73. During operation, warning lights shall be illuminated at all times. 74. During operation, warning lights shall be illuminated at all times. 75. During operation, warning lights shall be illuminated at all times. 76. During operation, warning lights shall be illuminated at all times. 77. During operation, warning lights shall be illuminated at all times. 78. During operation, warning lights shall be illuminated at all times. 79. During operation, warning lights shall be illuminated at all times. 80. During operation, warning lights shall be illuminated at all times. 81. During operation, warning lights shall be illuminated at all times. 82. During operation, warning lights shall be illuminated at all times. 83. During operation, warning lights shall be illuminated at all times. 84. During operation, warning lights shall be illuminated at all times. 85. During operation, warning lights shall be illuminated at all times. 86. During operation, warning lights shall be illuminated at all times. 87. During operation, warning lights shall be illuminated at all times. 88. During operation, warning lights shall be illuminated at all times. 89. During operation, warning lights shall be illuminated at all times. 90. During operation, warning lights shall be illuminated at all times. 91. During operation, warning lights shall be illuminated at all times. 92. During operation, warning lights shall be illuminated at all times. 93. During operation, warning lights shall be illuminated at all times. 94. During operation, warning lights shall be illuminated at all times. 95. During operation, warning lights shall be illuminated at all times. 96. During operation, warning lights shall be illuminated at all times. 97. During operation, warning lights shall be illuminated at all times. 98. During operation, warning lights shall be illuminated at all times. 99. During operation, warning lights shall be illuminated at all times. 100. During operation, warning lights shall be illuminated at all times.

**Key:**

- Sign position and aspect of vision
- Position of signal head
- Position of pedestrian crossing
- Cones
- Work area
- Safety zone

**MINIMUM SAFETY ZONE MUST BE ADHERED TO 0.5m**      **MINIMUM SHUTTLE LANE WIDTHS MUST BE ADHERED TO 3.5m**

Traffic Management must comply with The Safety at Street Works and Road Works Code of Practice

**ROAD SPEED**

**30**

**CROSS SECTION**

**Lane 1 Closure or Shuttle Lane**

**DO NOT SCALE FROM THIS DRAWING.**      **3 WAY LIGHTS**

A	AS DRAWN
REV:	DATE DESCRIPTION

**GTM**  
**Go Traffic Management**

Head Office: Go Traffic Management, Chaddock Lane, Worsley, Manchester, M28 1XW  
Tel: 0161 351 5370  
www.gtm.co.uk

**TRAFFIC MANAGEMENT PLAN**

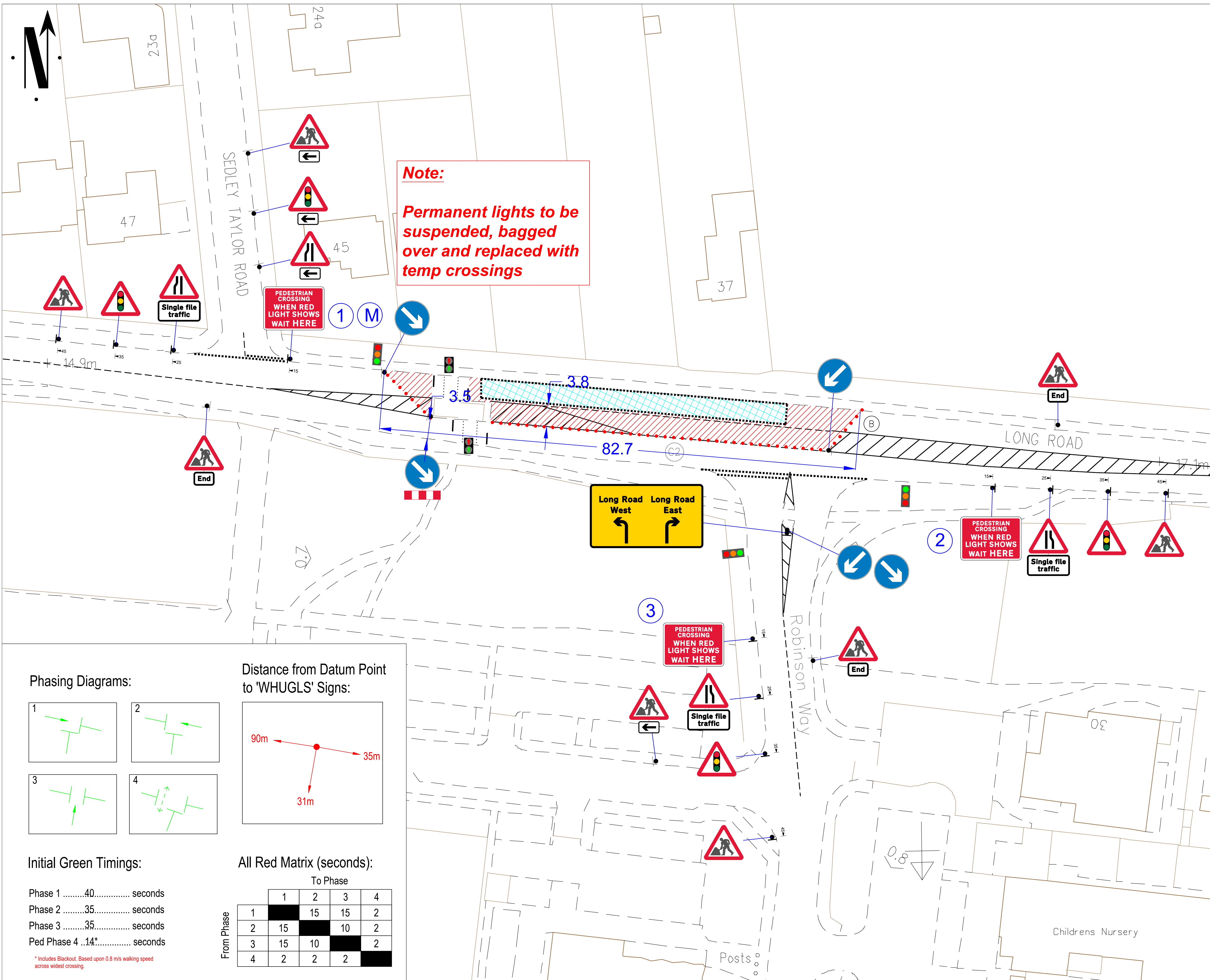
Client:

Drawing Number: 798383  
Drawing Title: Long Rd, Cambridge, CB2 8PP

Design:	Technical Officer:	REV:
Name: AH	CM	A
Signature:		
Date: 21/03/2024	21/03/2024	

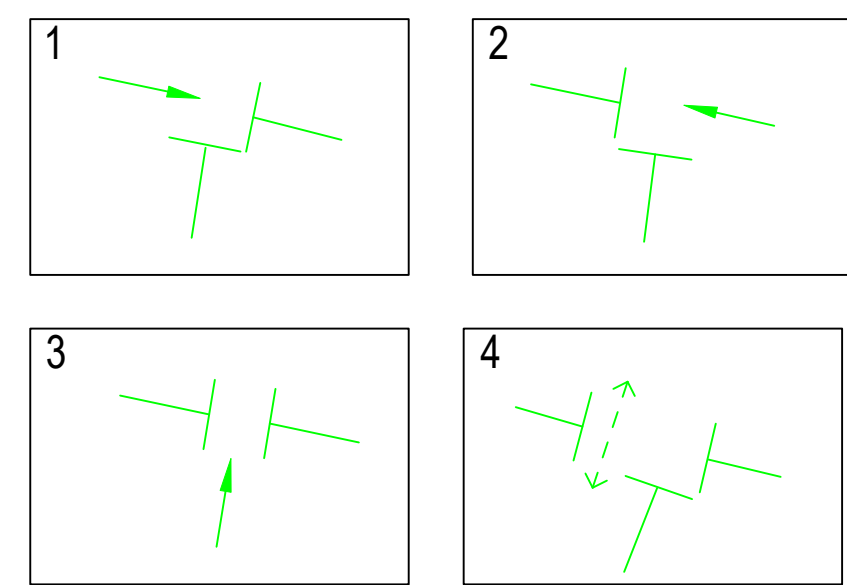
BASED UPON THE ORDNANCE SURVEY MAP WITH THE PERMISSION OF THE CONTROLLER OF H.M. STATIONERY OFFICE.



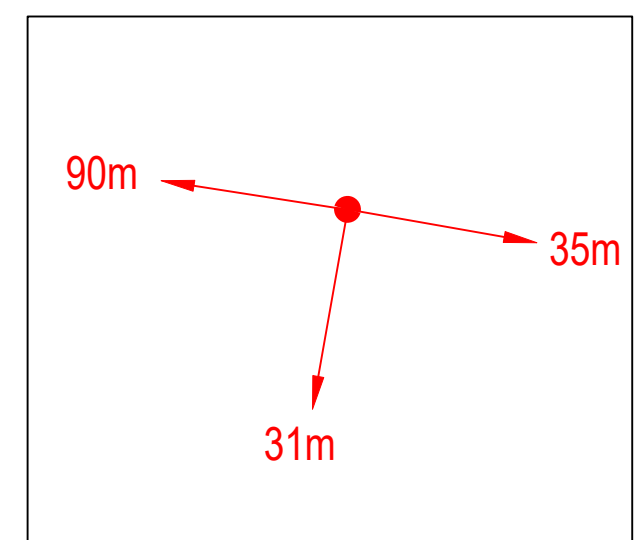


**Note:**  
Permanent lights to be suspended, bagged over and replaced with temp crossings

**Phasing Diagrams:**



**Distance from Datum Point to 'WHUGLS' Signs:**



**Initial Green Timings:**

- Phase 1 .....40..... seconds
- Phase 2 .....35..... seconds
- Phase 3 .....35..... seconds
- Ped Phase 4 ..14\*..... seconds

**All Red Matrix (seconds):**

		To Phase			
		1	2	3	4
From Phase	1		15	15	2
	2	15		10	2
	3	15	10		2
	4	2	2	2	

\* Includes Blackout. Based upon 0.8 m/s walking speed across widest crossing.

**Go Traffic Management**

This drawing has been produced for a specific client & project identified below and is not intended for use by any other person or for any other purpose. © Go Traffic Management

**Risks**

- Design completed from information provided + google maps desktop risk assessment
- Cone lamps must be used on all road with A speed limit of 40mph or more.

**Notes**

- All signs as per Chapter 8. Distances between cones to be 9m maximum unless otherwise noted.
- Distances between signs NOT to scale for purpose of clarity.
- All sign placement subject to available safe working space.
- The purpose of the Traffic Management Plan is for it to be used only as a guide and all traffic management equipment should be put out according to the 'Safety at Street Works and Road Works - Code of Practice', i.e. Red Book & the 'Traffic Signs Manual Chapter 8', i.e. Yellow Book.
- Lane width past the works to be 3.5m maximum, 3.25m desirable minimum and 3.0m absolute minimum.
- Stop & Go boards must be available and utilised in the event of permanent signal failure in accordance with Code of Practice.
- Signs must be placed in accordance with TSM and the scheme RAMS pack.
- Site conditions may have changed since the design of the drawing any changes which subsequently affect the design need to be reported by the Traffic Management Operative & any changes implemented must comply with Chapter 8.

**DETAIL B** **DETAIL C2**

**Key**

- Sign position and aspect of vision
- Position of signal head
- Position of pedestrian crossing
- Cones
- Work area
- Safety zone

**MINIMUM SAFETY ZONE MUST BE ADHERED TO 0.5m**      **MINIMUM SHUTTLE LANE WIDTHS MUST BE ADHERED TO 3.5m**

Traffic Management must comply with The Safety at Street Works and Road Works Code of Practice

**ROAD SPEED**

**CROSS SECTION**

Lane 1 Closure or Shuttle Lane

DO NOT SCALE FROM THIS DRAWING.

REV.	DATE	DESCRIPTION
B	12.03.24	Amended Specials Sign
A	20.10.23	AS DRAWN

**3 WAY LIGHTS**

**GTM**  
**Go Traffic Management**

Head Office: Go Traffic Management, Chaddock Lane, Worsley, Manchester, M28 1XW  
Tel: 0161 351 5370  
www.gtm.co.uk

**TRAFFIC MANAGEMENT PLAN**

Client:

Drawing Number: 798383B (926281)

Drawing Title: Long Road, Cambridge, CB2 8PP

TM1658-08

Name:	Design:	Technical Officer:	REV:
Chris.Mackinnon	H.Bamsey		B

Date: 13.03.2024      13.03.2024

BASED UPON THE ORDNANCE SURVEY MAP WITH THE PERMISSION OF THE CONTROLLER OF H.M. STATIONERY OFFICE.